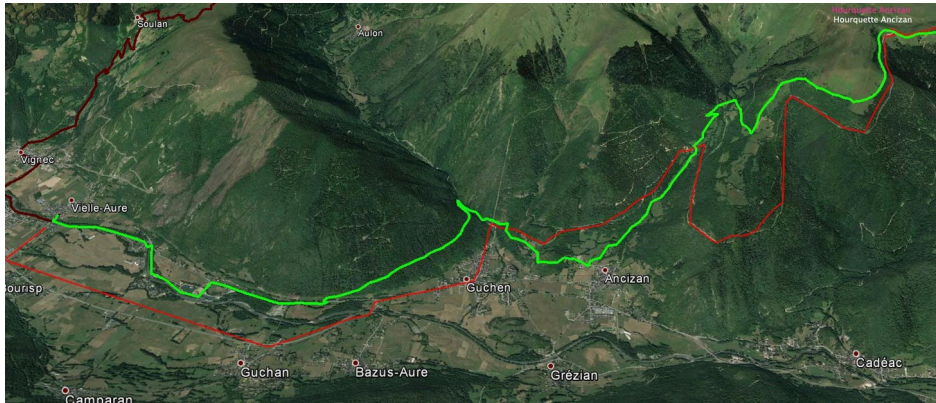


The main places where you can drive to follow the Ultra.
They are classified in the sense of trail.

Hourquette d'Ancizan: 13.4 Km

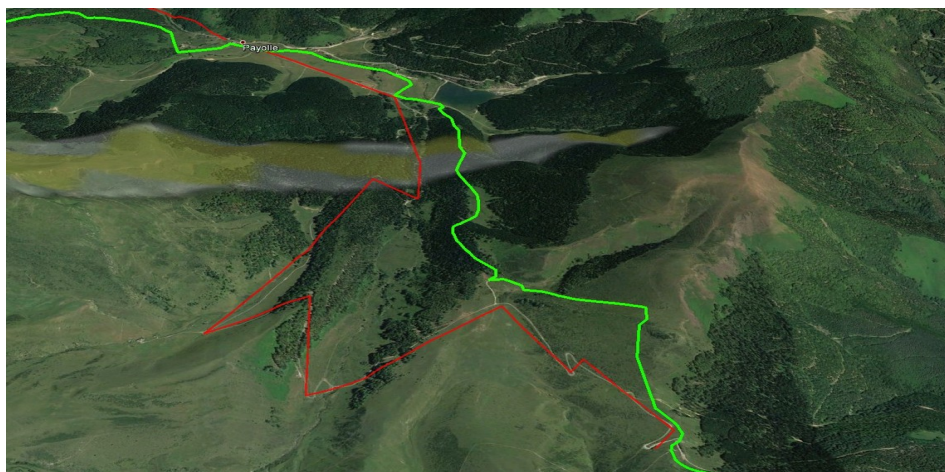


Take the **D929** towards Arreau 5km village of Guchen turn left on the D113 towards the Hourquette d'Ancizan 10,6 Km

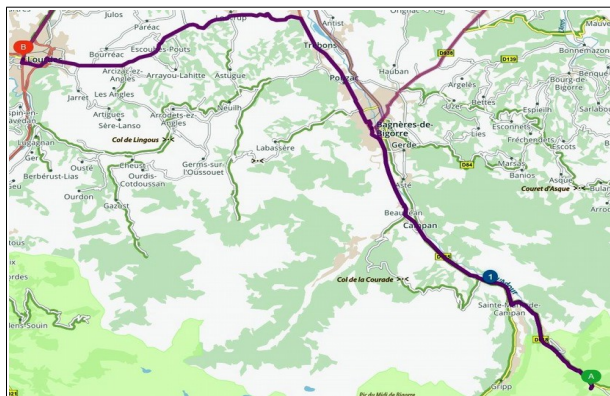
Trace red car circuit
Green trace the Ultra

ATTENTION the road D113 cuts twice the race

Payolle : 20 Km small refueling

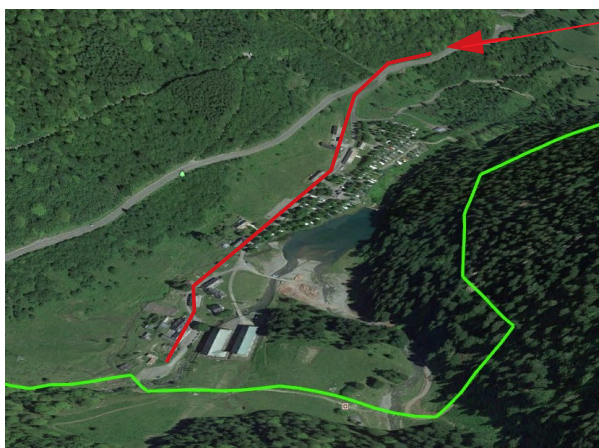


Continue on the **D113** for 10.6 km



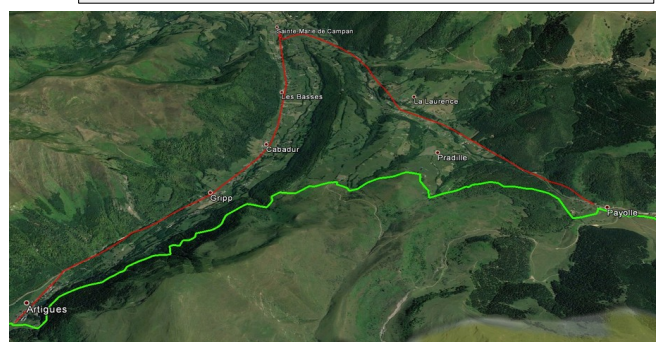
If you do not want to go through the Col du Tourmalet you can reach directly the climb to the Hautacam or Pierrefitte supply via Bagnères de Bigorre and Lourdes
[Go to page 3](#)

Artigues : 29Km



Take the **D918** to Sainte Marie de Campan; turn left on the **D918** towards La Mongie.
After 6.6Km we leave the **D918** on the left towards Artigues 1Km

13 km time 20mn



Col de Sencours : 36 Km et 43Km **small refueling**



Take the **D918** towards La Mongie and the pass of the Tourmalet 10.5Km, leave the car at the pass.

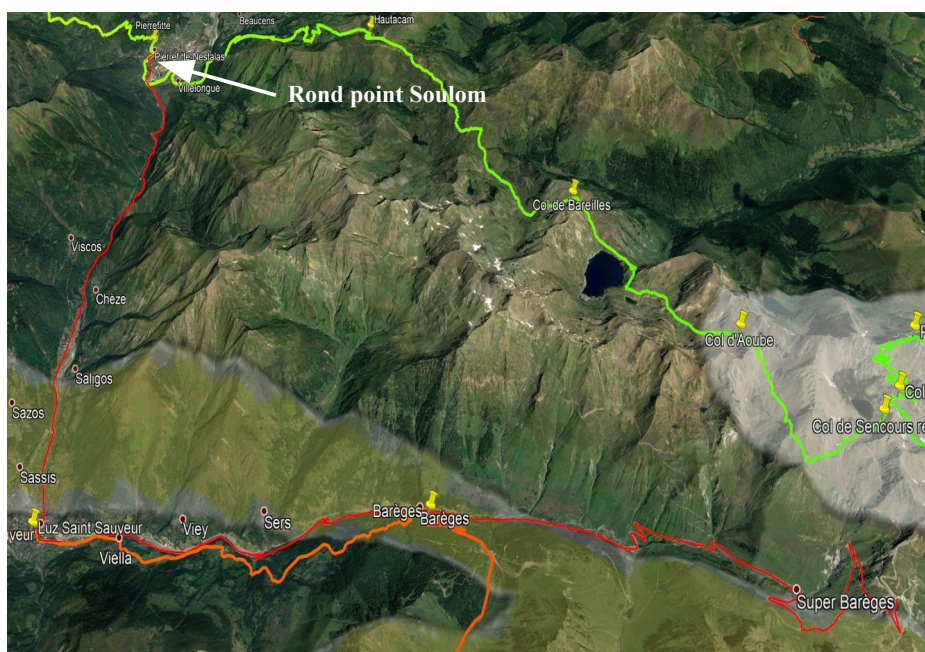
On foot take the path towards Col de Sencours **1 hour**. We can see the runners on the ascent and descent of the Pic du Midi

In red car ride in purple footpath

Departure on foot



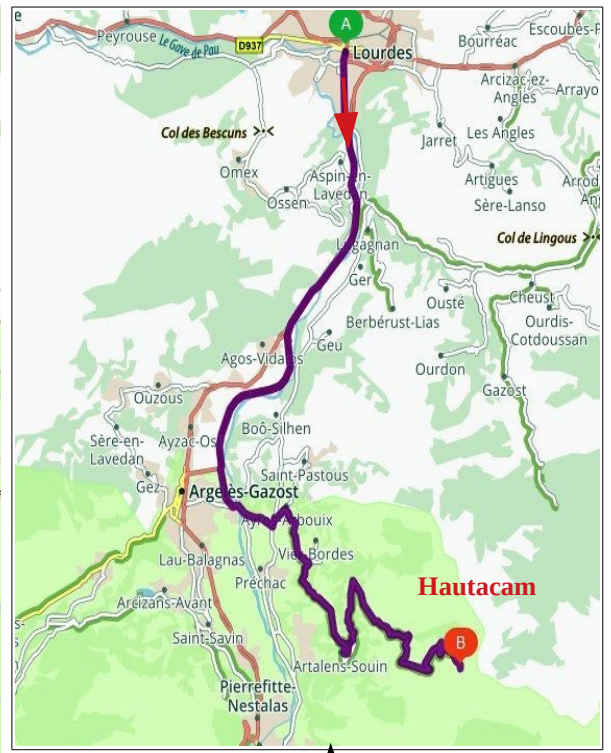
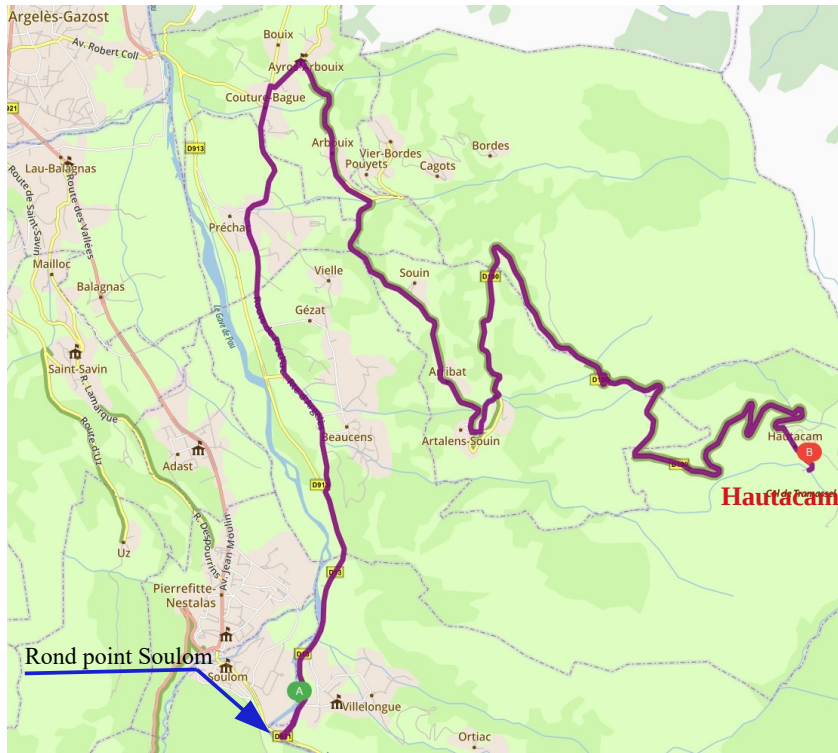
Refueling at the pass of col de Sencours



Go down on foot to the Col du Tourmalet, take the **D918** via Barèges and Luz Saint Sauveur then the **D921** to the roundabout of Soulom.

32Km time 50 mn

Hautacam 61Km small refueling



COMING FROM THE TOURMALET COLLAR

At the roundabout of Soulom take on the right the
D13 which becomes again **D913**
The path for the Hautacam is signposted.
Return by the same road
21Km estimated time 35minutes

COMING FROM PAYOLLE

At the Lourdes exit, take the 4-lanes towards
Argeles-Gazost at the end of the 4-lanes
direction for Hautacam is signposted
The return view the route map Tourmalet
66 Km estimated time 1h 30

Pierrefitte 74 Kmbig refueling

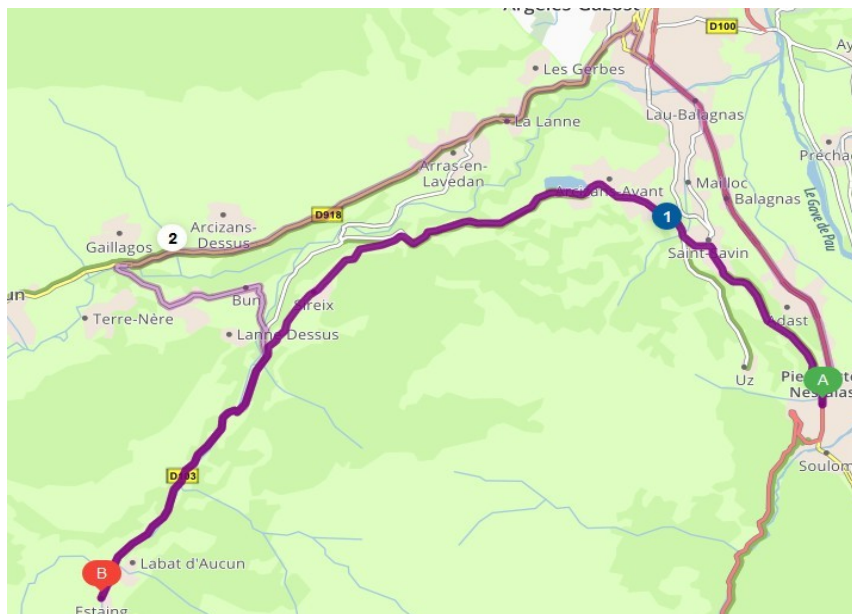


Refueling next to the Mairie

Return from Hautacam

Rond point Soulom

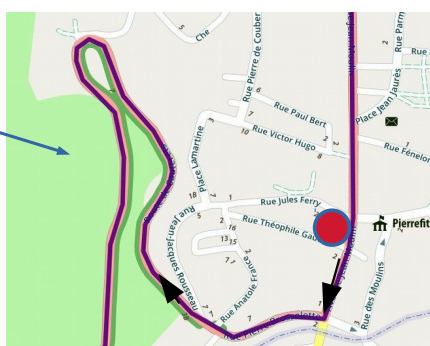
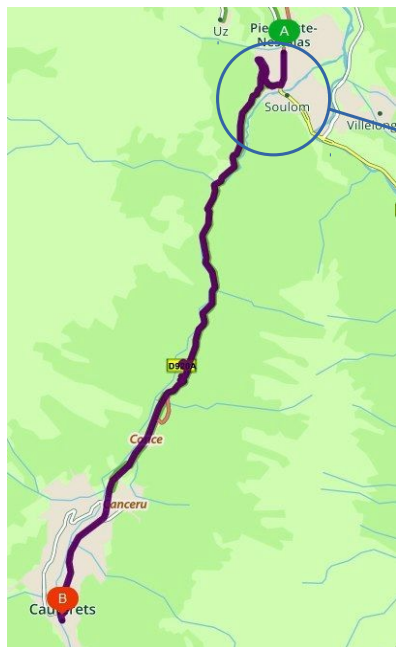
Estaing 92 Km small refueling



Leave Pierrefitte towards Lourdes
After 200m turn left onto the **D13**
Saint Savin; Arcizans-Avant; Estaing Return
to Pierrefitte by the same road
13Km time 25 mn



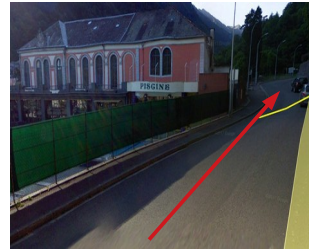
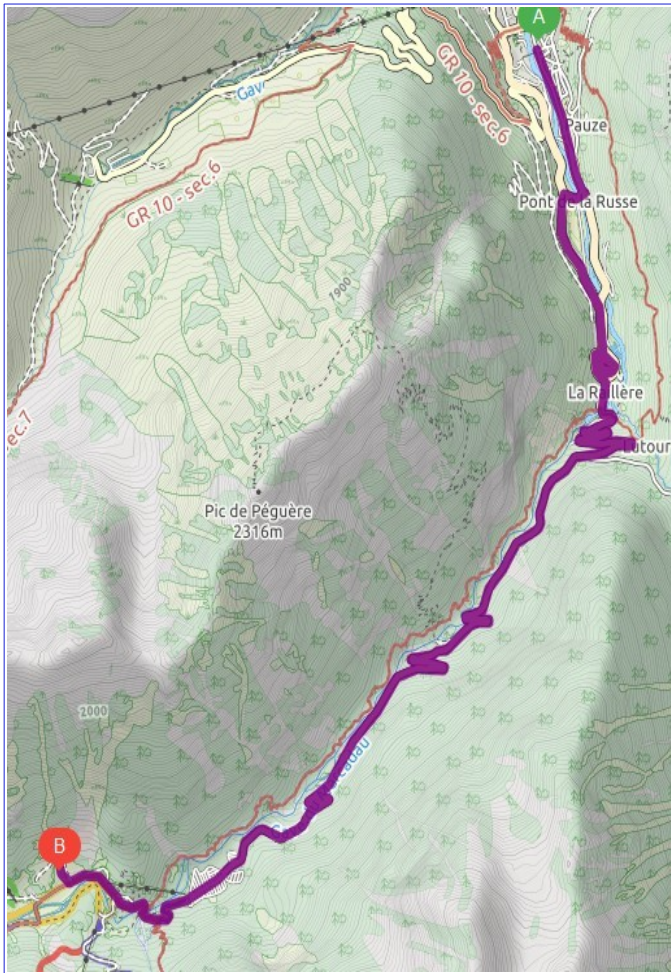
Cauterets 111KM big refueling



Since refueling Pierrefitte take the
D920 towards Cauterets.
Cauterets refueling is a room
in the casino
near the thermal baths
11 km time 20mn



Pont d'Espagne 117 Km



From the refueling of Cauterets continue towards the bridge of Spain.

Toll parking

Yellow trace: Ultra

Trace violet foot passage 400m

8Km time 15 mn



Gavarnie 144Km big refueling

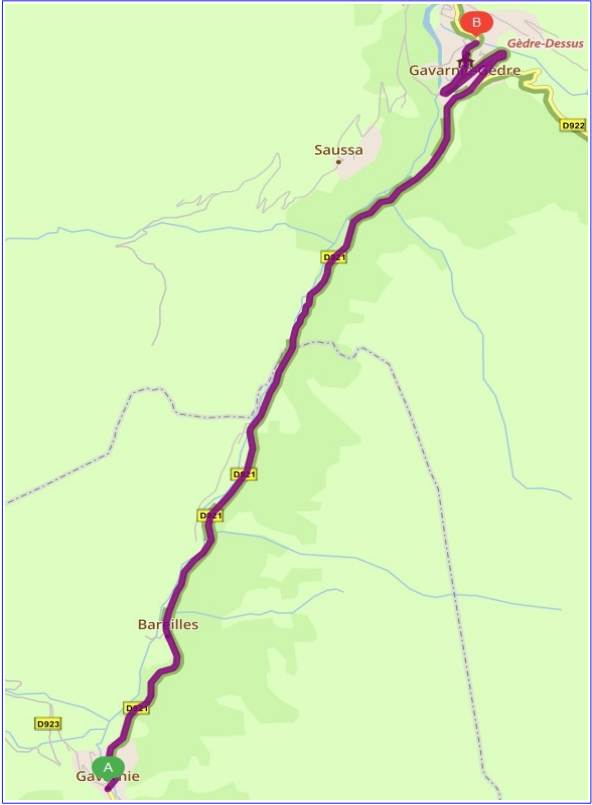


Back to Pierrefitte by the **D920A**
Then the **D921** by Luz Saint Sauveur, Gèdre, and Gavarnie

Cauterets → Gavarnie 42Km time 55mn



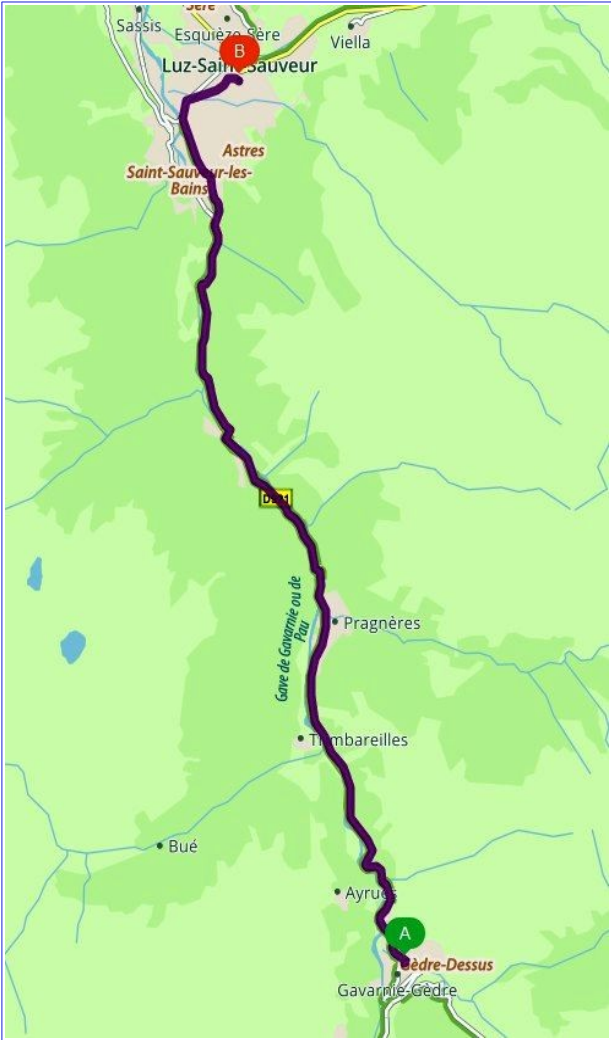
Gèdre 154 Km small refueling



Gavarnie Gèdre D921
8Km time 10mn



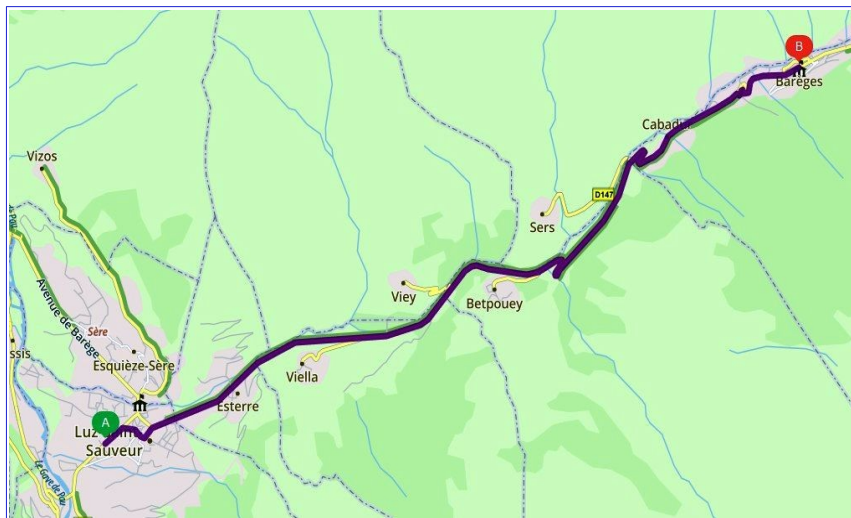
Luz Saint Sauveur 167 Km big refueling



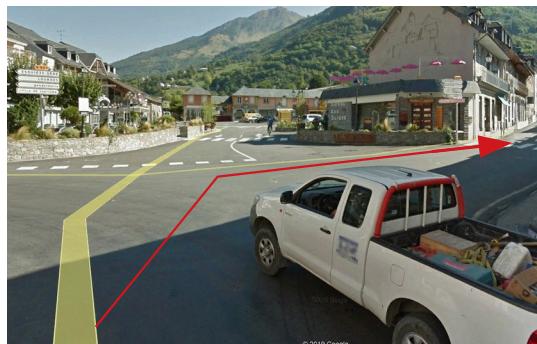
Continue on the D921
to Luz Saint Sauveur
11Km time 15mn



Barèges 175 Km small refueling



Continue on the **D921**
until next carefour
turn right towards Barèges **D918**
8Km time 15 mn



Refueling in the center of Barèges
On the forecourt of the village hall

