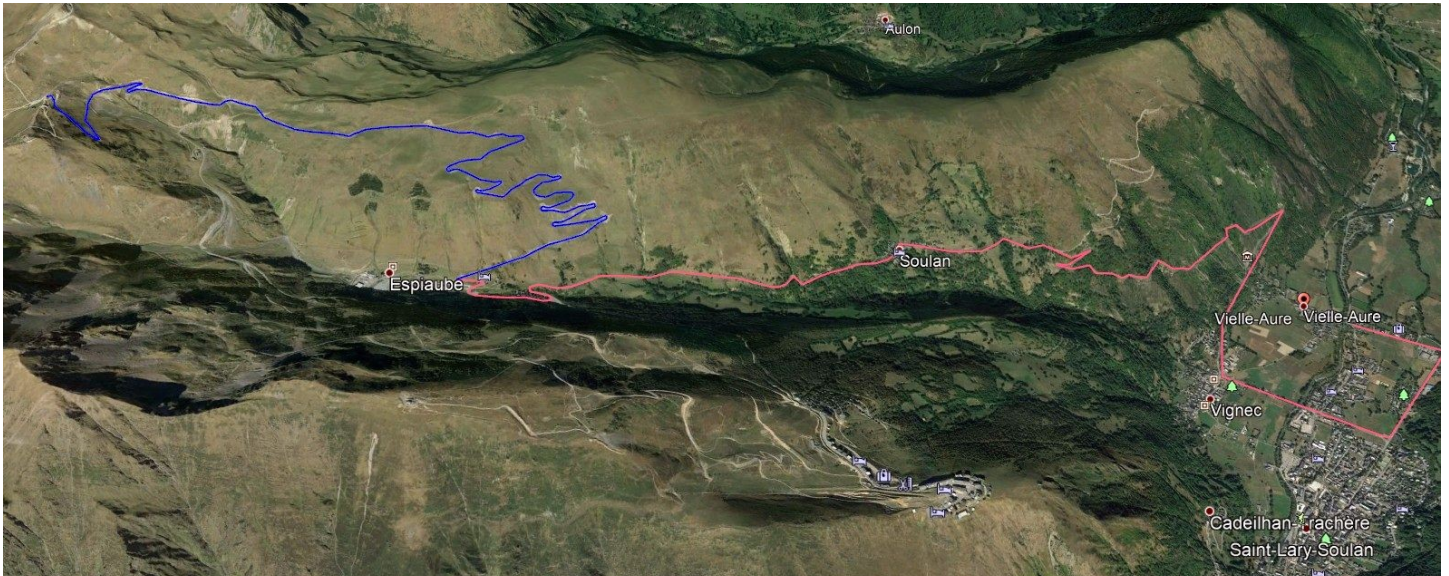


## ULTRA 2020

The main places where you can drive to follow the Ultra.  
They are classified in the sense of trail

### Le col de Portet 14.4 Km



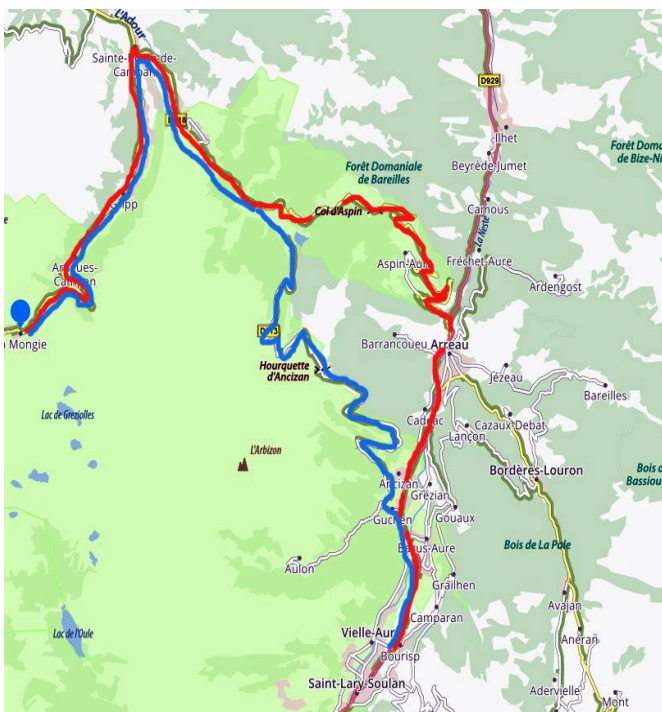
Red line Vieille Aure, Vignec, Soulan Espiaube D123

Blue line Espiaube col de Portet

**WARNING THIS ROAD IS CLOSED FROM 10 AM TO 4 PM**

Ascent of the pass 18 Km time 45 mn

### La Mongie 30 Km **small refueling**



Vieille Aure La Mongie trace rouge  
Via the Col d'Aspin 1489m

Take the D929 to Arreau. At the exit take the D918 on the left towards Col d'Aspin then Payolle. We continue on the D918 to Sainte Marie de Campan. Always turn left on the D918 towards La Mongie. The refueling is at the entrance of La Mongie

Distance 46Km Temps 1H15

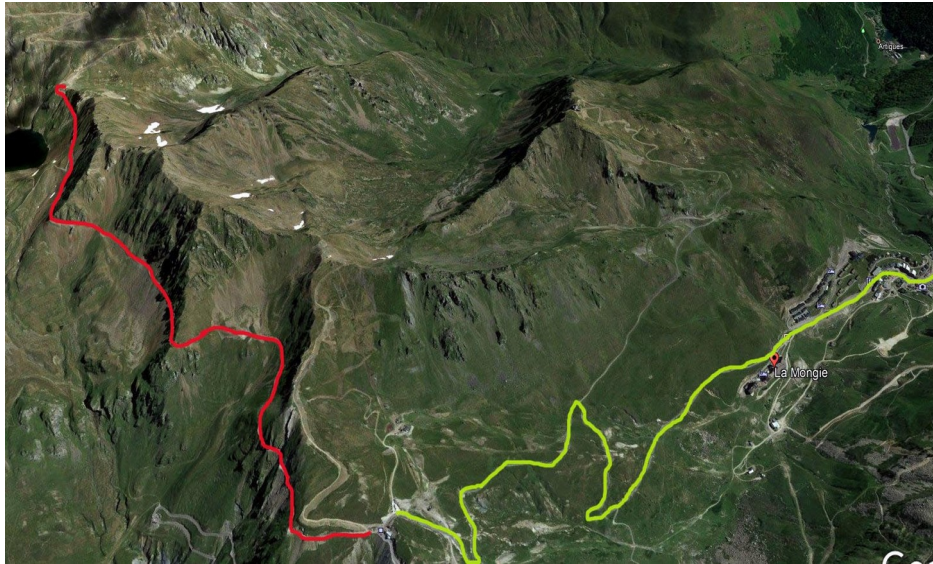
Vieille Aure La Mongie trace bleu  
Via la hourquette d'Ancizan 1564m

Take the D929 in the direction of Arreau. 5km after the village of Guchen, turn left onto the D113 in the direction of La Hourquette d'Ancizan. 10,6 Km. Continue after the Hourquette for 10,6 km to reach Payolle. Continue on the D918 to Sainte Marie de Campan. Turn left again on the D918 direction La Mongie. The refueling is at the entrance of La Mongie.

Distance 44Km Temps 1H10



## Col de Sencours 36 Km et 43Km small refueling



Take the **D918** towards the Col du Tourmalet 10.5Km, leave the car at the pass.

**On foot, take the path towards the Sencours pass for 1 hour. You can see the runners on the way up and down the Pic du Midi.**

In yellow car route in red walking route

Time total 1h20mn

**walking start**

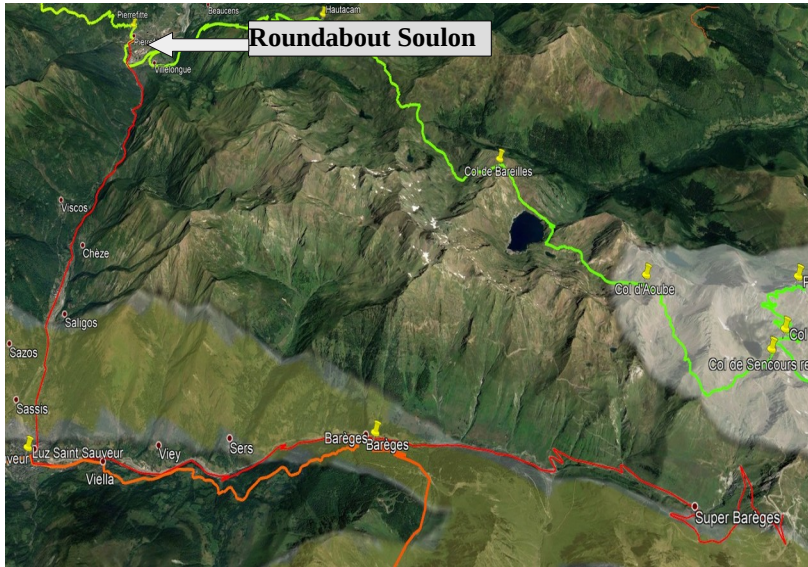


## refueling at the Sencours pass



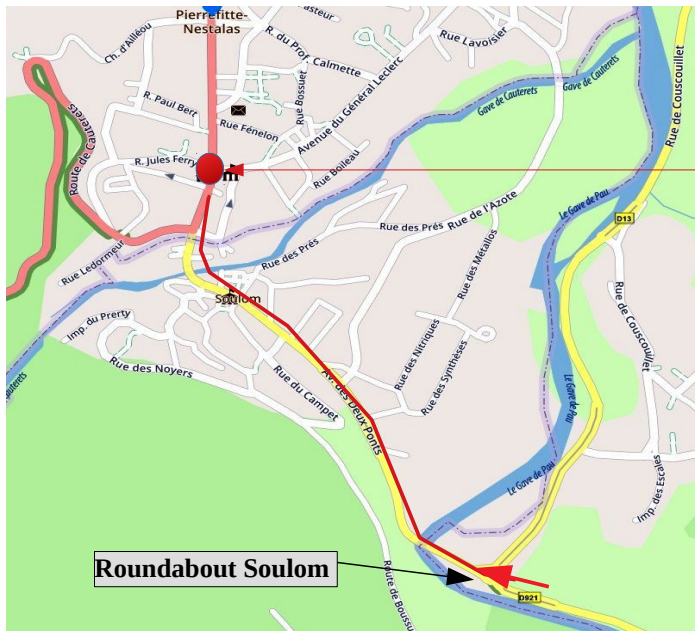


**Pierrefitte 75 Km Big refueling**



Walk down to the Tourmalet Pass, 50 minutes  
Take the D918 via Barèges and Luz St. Sauveur  
then the D921 to the Soulom roundabout,  
entrance to Pierrefitte. 32Km time 50 mn

**Total time 1h40mn**



refueling are located next to the Town Hall.

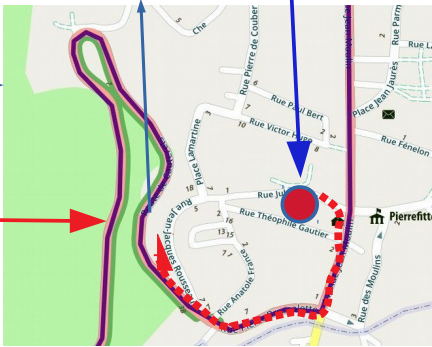
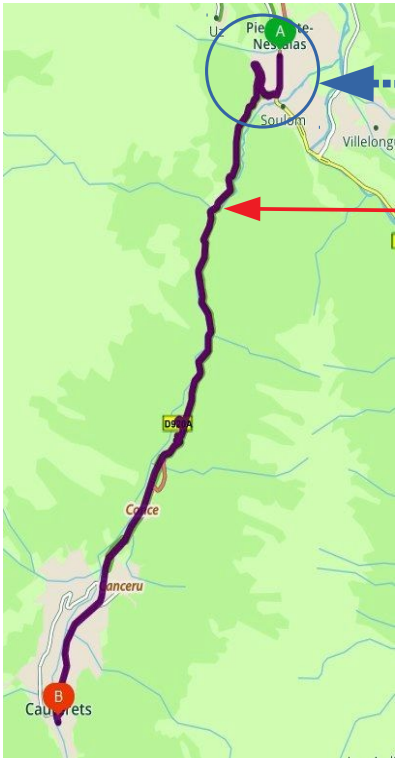




Cauterets 97KM smal refueling

From Pierrefitte take the D920A in the direction of Cauterets.  
11 Km time 20mn

refueling of Pierrefitte



Cauterets refueling are in a room in the casino near the thermal baths.

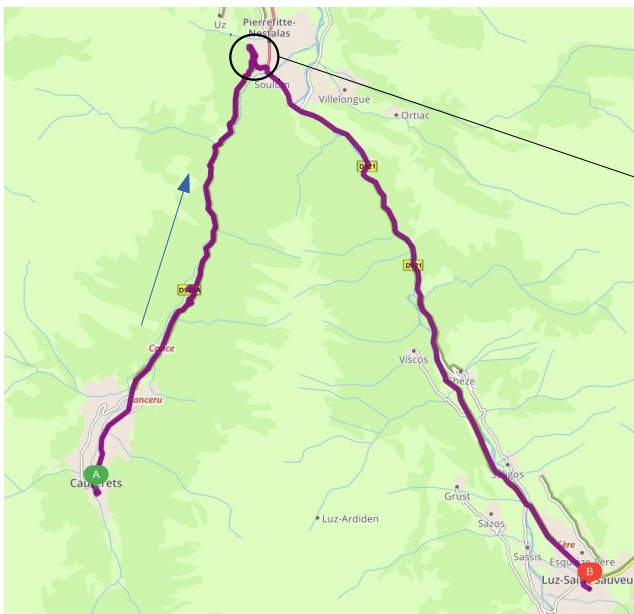
Casino Park of Cauterets



## Luz Saint Sauveur 114 Km big refueling

From Cauterets take the D920A to Pierrefitte 20mn  
Turn left in the direction of Luz St, Sauveur on the D921 20mn

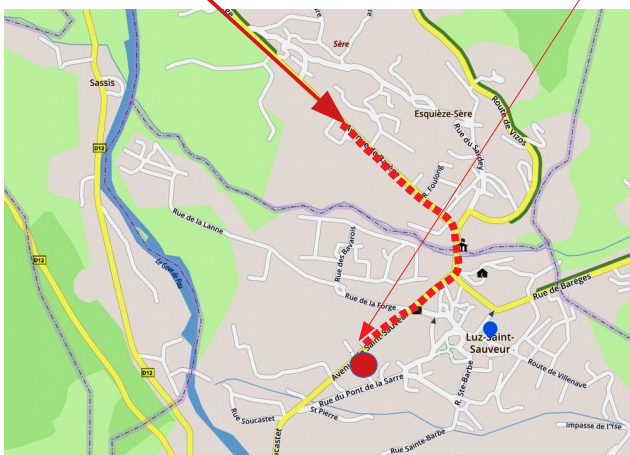
23 Km time 40mn



In the center of Luz Saint Sauveur take direction of Gavarnie

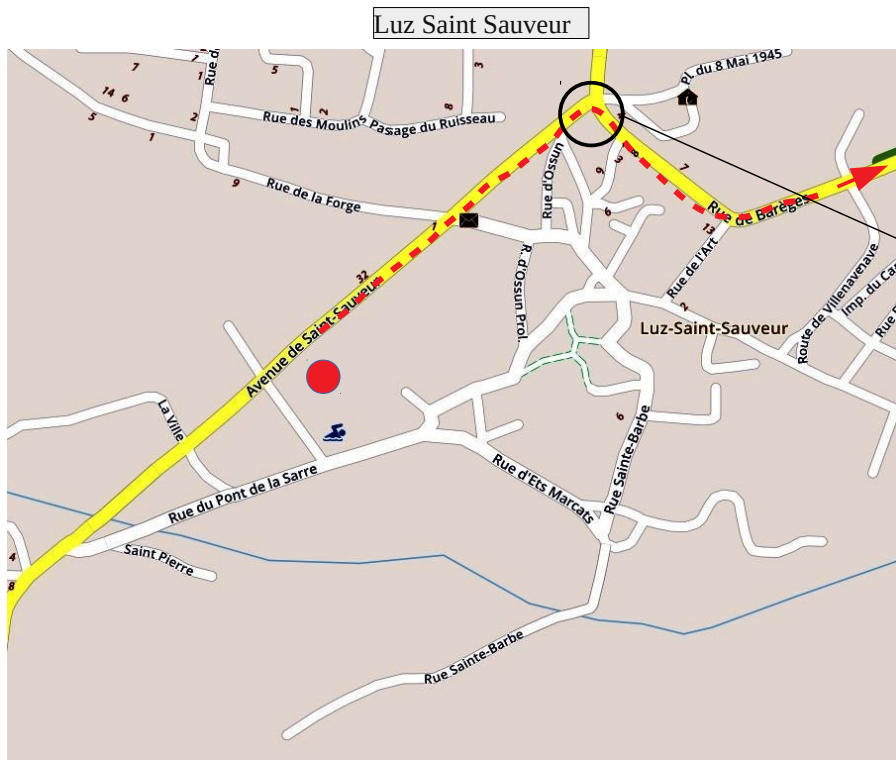
Pierrefitte

refueling





## Tournabou 130 Km small refueling



Return to the centre of Luz  
at intersection  
turn right direction Barèges D918  
and Tournabou  
12Km temps 20 mn

